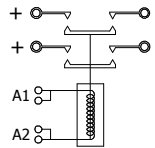
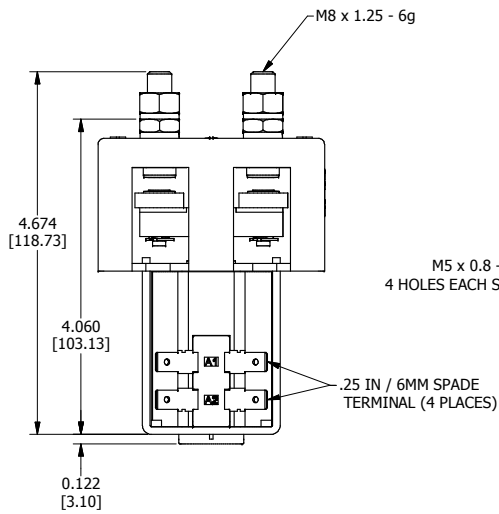
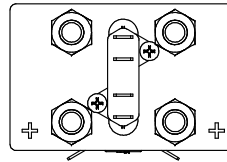
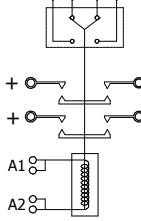


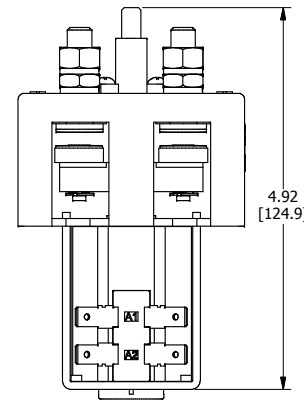
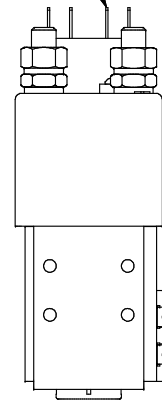
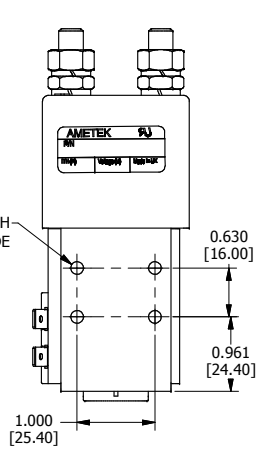
DOUBLE POLE
SINGLE THROW, N.O.



DOUBLE POLE
SINGLE THROW, N.O.
AUXILIARY CONTACTS
N.O. N.C. N.C. N.O.



.25 IN / 6MM SPADE
TERMINAL (4 PLACES)



JBD46 SERIES

CONTACT CONFIGURATION: DPST, N.O.

MAIN CONTACT DATA

I THERMAL, I_{th}: 200 AMPS
RESISTIVE LOAD: 200 AMPS @ 60 VDC MAX
OVERLOAD: 300 AMPS PER UL 508
INDUCTIVE LOAD: 150 AMPS @ 96 VDC MAX
ARC RUPTURE: 1200 AMPS PER UL 583
CONTACT VOLTAGE DROP: <40 mV TYPICAL
MATERIAL: AgSnO₂

COIL DATA

COIL VOLTAGES: 12 - 340 VDC
COIL TYPES:
CONTINUOUS DUTY
INTERMITTENT DUTY
PRLONGED DUTY
HIGH POWER INTERMITTENT DUTY

OPTIONS

AUXILIARY CONTACTS
5 AMPS, 250VAC/28VDC
FORM Z SPDT-DB
MAGNETIC BLOWOUTS
MOUNTING BRACKETS
LARGE CONTACTS
SERATED CONTACTS
COIL SUPPRESSION
FLYING LEADS
ACV COIL W/ RECTIFIER

TEMPERATURE: -20°C TO +50°C

MECHANICAL LIFE: > 3 X 10⁶
IP CODE: IP31 PER IEC 60529

APPROXIMATE WEIGHT: 0.82 kg [1.80 lbs]

RoHS COMPLIANT

MATERIAL HANDLING UL FILE: Au2277

TELECOM UL FILE: E161810

RECOMMENDED TORQUE, M8: 84 In-Lb [9.5 Nm] MAX.

RECOMMENDED TORQUE, M5: 15 In-Lb [1.7 Nm] MAX.

CHANGE RECORD		UNLESS OTHERWISE SPECIFIED: DIMENSIONS ARE IN INCHES (MILLIMETERS) DIMENSIONS SHOW UNLESS OTHERWISE INDICATED TO RECOGNIZED DIMENSIONS.		Unless this drawing is being viewed from the file server of Ametek/Prestolite Power and Switch, it is an UNCONTROLLED DOCUMENT. DESTROY ALL COPIES AFTER INITIAL USE!	
D.C. NO.	DATE	DESCRIPTION	ACTIVITY	BY	REPLACES
		08-03-2010	JBD46 SERIES		
FINISH CODE PER		TITLE			
		CONTACTOR, DPST, N.O.			
DESCRIPTION DATA					
REVISION	DRAWN	DATE	SHEET		
		08-03-2010	4 of 7		
CHECKED	APPROVED	RECORDS	4 of 7		
DID NOT SCALE DRAWING					
CONFIDENTIAL: This drawing, including all information contained herein, is the exclusive and confidential property of Ametek/ Prestolite Power and Switch, of Troy, Ohio 45373. This drawing is not to be copied, reproduced, delivered or disclosed to others, in whole or in part, except with express written permission.					
 PRESTOLITE SWITCH TROY, OHIO 45373, U.S.A.			SIZE	DWG. NO.	
			JBD46 SERIES		