

JBA46 SERIES

CONTACT CONFIGURATION: SPST, N.O.

MAIN CONTACT DATA

- I THERMAL, I_{th}: 200 AMPS
- RESISTIVE LOAD: 200 AMPS @ 60 VDC MAX
- OVERLOAD: 300 AMPS PER UL 508
- INDUCTIVE LOAD: 150 AMPS @ 96 VDC MAX
- ARC RUPTURE: 1200 AMPS PER UL 583
- CONTACT VOLTAGE DROP: <40 mV TYPICAL
- MATERIAL: AgSnO₂

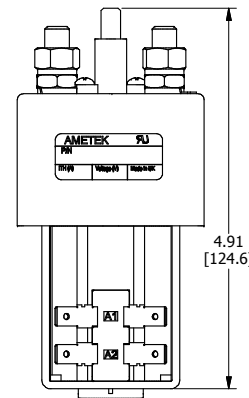
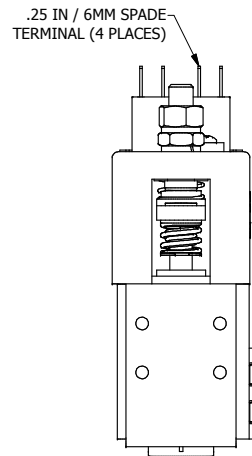
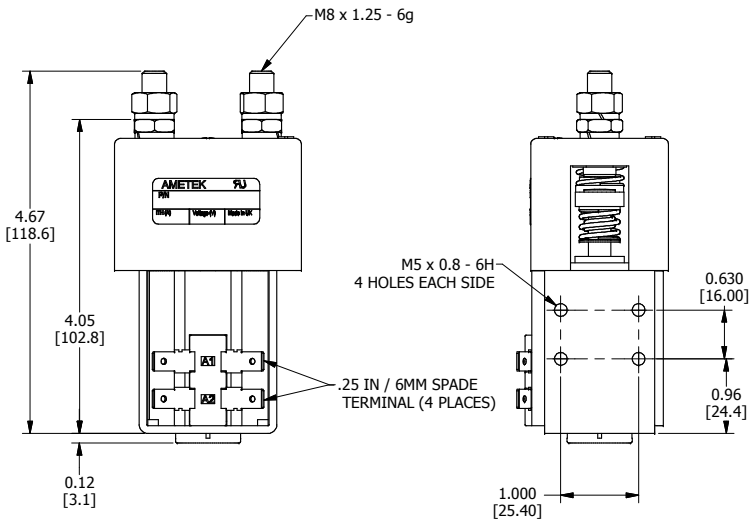
COIL DATA

- COIL VOLTAGES: 12 - 340 VDC
- COIL TYPES:
 - CONTINUOUS DUTY
 - INTERMITTENT DUTY
 - PRLONGED DUTY
 - HIGH POWER INTERMITENT DUTY

OPTIONS

- AUXILIARY CONTACTS
 - 5 AMPS, 250VAC/28VDC
 - FORM Z SPDT-DB
- MAGNETIC BLOWOUTS
- ENCLOSED HOUSING
- MOUNTING BRACKETS
- LARGE CONTACTS
- SERATED CONTACTS
- COIL SUPPRESSION
- FLYING LEADS
- ACV COIL W/ RECTIFIER

- TEMPERATURE: -20°C TO +50°C
- MECHANICAL LIFE: >3 X 10⁶
- IP CODE: IP31 PER IEC 60529
- APPROXIMATE WEIGHT: 1.49 kg [0.68 lbs]
- RoHS COMPLIANT
- MATERIAL HANDLING UL FILE: Au2277
- TELECOM UL FILE: E161810
- RECOMMENDED TORQUE, M8: 84 In-Lb [9.5 Nm] MAX.
- RECOMMENDED TORQUE, M5: 15 In-Lb [1.7 Nm] MAX.



CHANGE RECORD		UNLESS OTHERWISE SPECIFIED: DIMENSIONS ARE IN INCHES (MILLIMETERS). DIMENSIONS SHOW MINUS TOLERANCE FOR VENOR DESIGNED PARTS AND ITEMS INDICATED TO RECOGNIZED CHANGES.		Unless this drawing is being viewed from the file server of Ametek/Prestolite Power and Switch, IT IS AN UNCONTROLLED DOCUMENT. DESTROY ALL COPIES AFTER INITIAL USE!	
E.C. NO.	DATE	REVISION	DESCRIPTION	FINISH CODE PER	APPROVED BY
		08-03-2010	JBA46 SERIES		
PROJECT	NO.	ANGLES	± 0.5°	TITLE	
				CONTACTOR, SPST, N.O.	
DECIMAL INCH		METRIC		DESCRIPTIVE DATA	
0.1	0.06	0.1	1.5	REVISION	DATE
0.01	0.03	0.01	0.8	08-03-2010	
0.001	0.005	0.001	0.125	CHECKED	RECORDS
DID NOT SCALE DRAWING				APPROVED	SHEET
					1 of 7
CONFIDENTIAL: This drawing, including all information contained herein, is the exclusive and confidential property of Ametek/ Prestolite Power and Switch, of Troy, Ohio, 45373. This drawing is not to be copied, reproduced, delivered or disclosed to others, in whole or in part, except with express written permission.					
				DWG. NO. JBA46 SERIES	