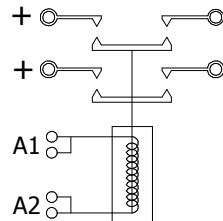


DOUBLE POLE
SINGLE THROW, N.O.



JAD46 SERIES

CONTACT CONFIGURATION: DPST, N.O.

MAIN CONTACT DATA

I THERMAL, I_{th}: 125 AMPS
 RESISTIVE LOAD: 125 AMPS @ 60 VDC MAX
 OVERLOAD: 188 AMPS PER UL 508
 INDUCTIVE LOAD: 100 AMPS @ 96 VDC MAX
 ARC RUPTURE: 800 AMPS PER UL 583
 CONTACT VOLTAGE DROP: <40 mV TYPICAL
 MATERIAL: AgSnO2

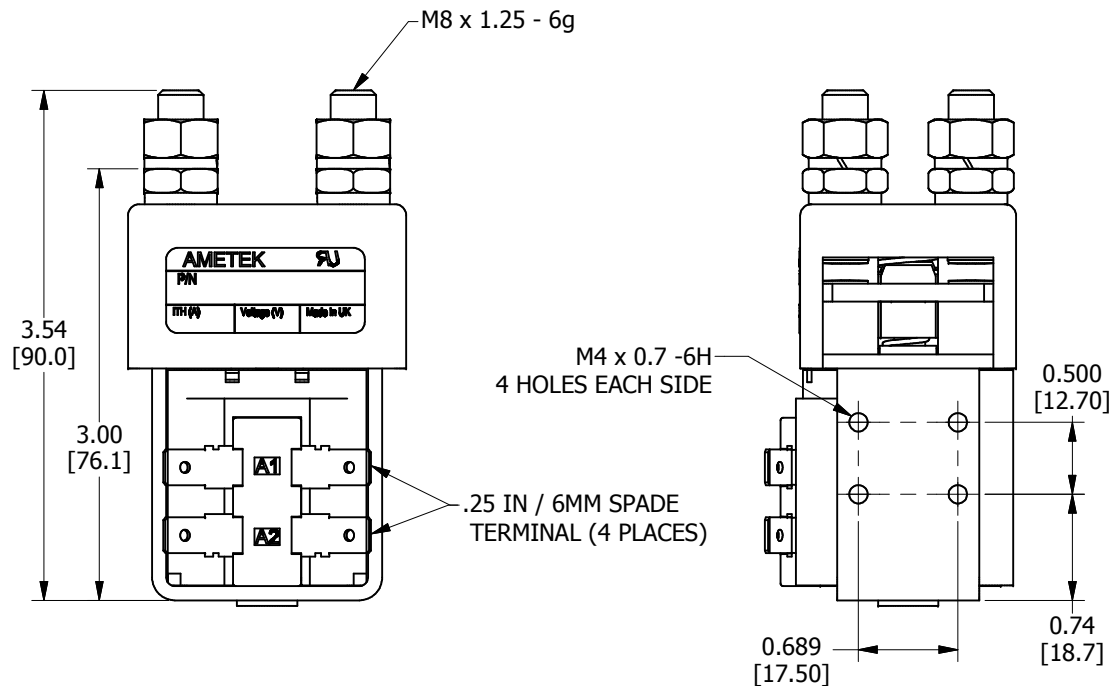
COIL DATA

COIL VOLTAGES: 12 - 340 VDC
 COIL TYPES:
 CONTINUOUS DUTY
 INTERMITTENT DUTY
 PRLONGED DUTY
 HIGH POWER INTERMITENT DUTY

OPTIONS

AUXILIARY CONTACTS
 5 AMPS, 250VAC/28VDC
 FORM Z SPDT-DB
 MAGNETIC BLOWOUTS
 MOUNTING BRACKETS
 LARGE CONTACTS
 SERATED CONTACTS
 COIL SUPPRESSION
 FLYING LEADS
 ACV COIL W/ RECTIFIER

TEMPERATURE: -20°C TO +50°C
 MECHANICAL LIFE: >3 X 10⁶
 IP CODE: IP31 PER IEC 60529
 APPROXIMATE WEIGHT: 0.38 kg [0.84 lbs]
 RoHS COMPLIANT
 MATERIAL HANDLING UL FILE: Au2277
 TELECOM UL FILE: E161810
 RECOMMENDED TORQUE, M8: 84 In-Lb [9.5 Nm] MAX.
 RECOMMENDED TORQUE, M4: 13.2 In-Lb [1.5 Nm] MAX.



CHANGE RECORD		UNLESS OTHERWISE SPECIFIED:		Unless this drawing is being viewed from the file server of Ametek/Prestolite Power and Switch, it is an UNCONTROLLED DOCUMENT. DESTROY ALL COPIES AFTER INITIAL USE!			
E.C. No.	DATE	DIMENSIONS ARE IN INCHES (MILLIMETERS): TOLERANCES BELOW APPLY EXCEPT FOR VENDOR DESIGNED PARTS AND ITEMS PRODUCED TO RECOGNIZED STANDARDS.		FINISH CODE PER			
		PLOT DATE	FILE NAME	ACTIVITY	REPLACED BY	REPLACES	
		08-03-2010	JAD46 SERIES				
		FRACT. INCH ±	ANGLES ± 0.5°	TITLE			
				CONTACTOR, DPST, N.O.			
		DECIMAL-INCH METRIC		DESCRIPTIVE DATA			
		.0 ± .06	0. ± 1.5	DESIGNED	DRAWN	DATE	SCALE
		.00 ± .03	0.0 ± 0.8		08-03-2010		
		.000 ± .010	0.00 ± 0.25	CHECKED	APPROVED	RECORDS	SHEET
		DO NOT SCALE DRAWING					4 of 7

CONFIDENTIAL: This drawing, including all information contained thereon, is the exclusive and confidential property of Ametek/Prestolite Power and Switch, of Troy, Ohio 45373. This drawing is not to be copied, reproduced, delivered or disclosed to others, in whole or in part, except with express written permission.



SIZE DWG. NO.
JAD46 SERIES